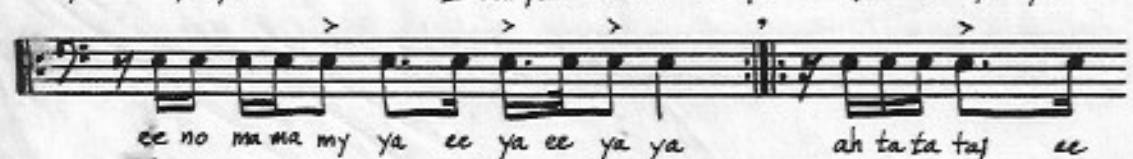
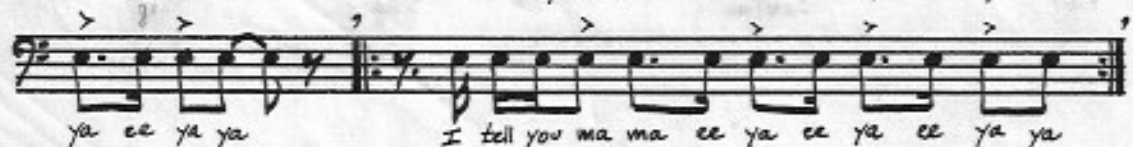
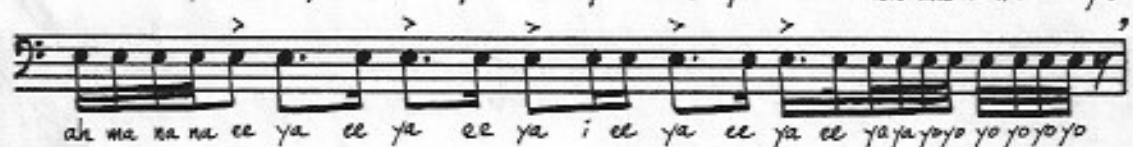
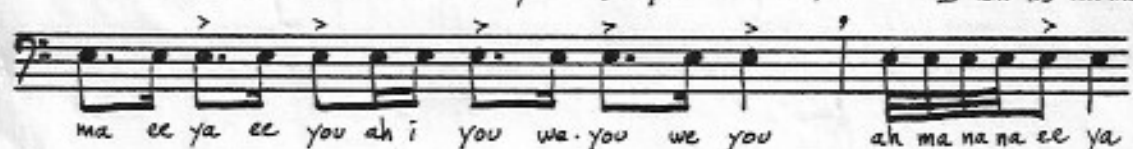
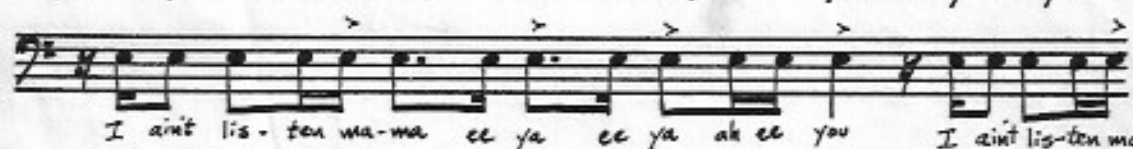
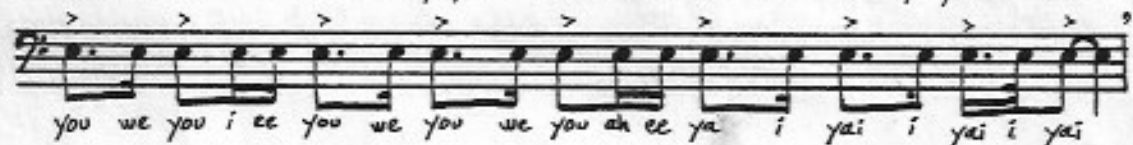
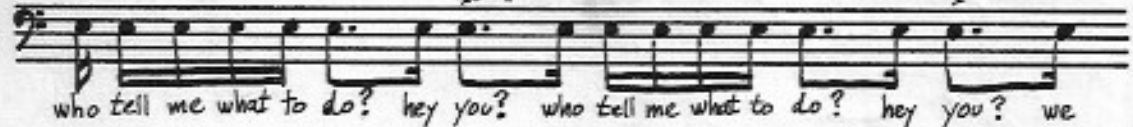
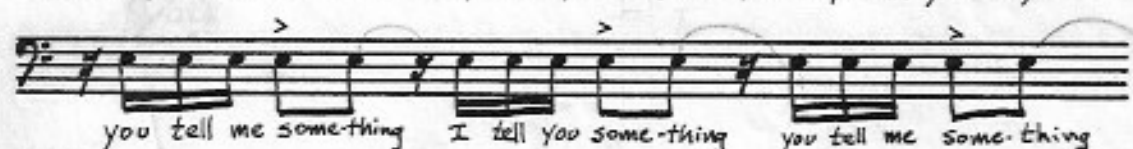
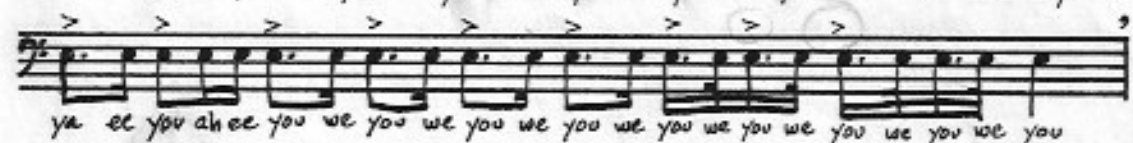
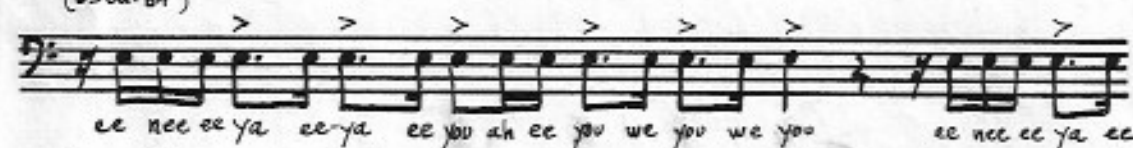


# I aint listen

Jana Hainsohn

(d=ca.84)



ya ee ya ya ee no ma na my ya ee ya ee ya ya

II In this following section, the tempo increases and the choice of syllables is freer (♩ = ca. 108)

(5)

(improvise syllables from among "ya, na, pa, ta, tu, ni") (change to "di, du, da"

(use "du" with strong u) em ma la la (use "li, lu") (use "lu" )

ah ee um ba ya la la la la (use "na, ma") ma na nu ma na na ma na

(continue using "na, na, nu") change improvising syllables (use "ni")

(use "da, di, du") (use "dubu, duwa")

(use "gida, guda") (use "du")

Continue improvising in this manner and with this material moving up the voice register as indicated to the highest possible note

Repeat Part I, and with wild improv. repeat the PART I beginning